



Tythe Barn Cottages, Lenchwick, WR11 4TG

**SHELDON
BOSLEY
KNIGHT**

LAND AND
PROPERTY
PROFESSIONALS

Property Description

THREE BEDROOM CHARACTER COTTAGE IN SOUGHT-AFTER VILLAGE LOCATION

This charming and well-presented three bedroom character cottage is nestled in the heart of a picturesque village setting. The property boasts period features throughout and offers spacious living across two floors, ideal for families or those seeking a peaceful retreat.

The ground floor welcomes you with a traditional entrance hall leading to a bright and airy lounge complete with an open fireplace. Adjacent is a generous dining room that flows into a well-appointed kitchen with access to the rear garden. A convenient downstairs WC completes the ground floor layout.

Upstairs, the cottage offers three well-proportioned bedrooms and a modern, recently fitted family bathroom. Outside, the property enjoys a pretty, enclosed rear garden perfect for relaxing or entertaining. To the rear and side, there is ample off-road parking, including space beside two sheds, and a useful car port with additional storage.

Further benefits include gas central heating, double glazing, and easy access to local village amenities.

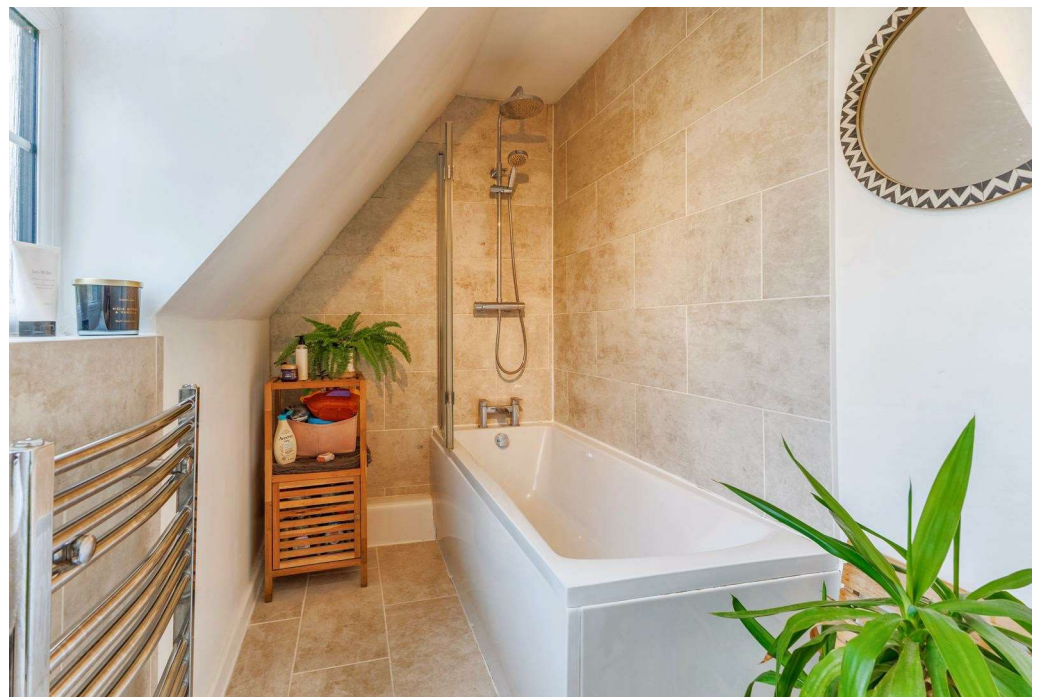




Key Features

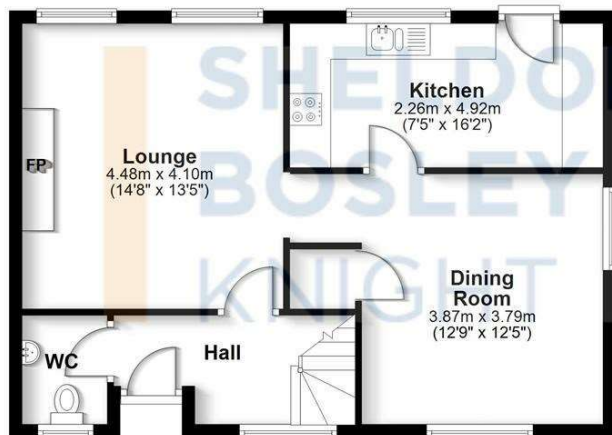
- THREE BEDROOM CHARACTER COTTAGE
- TWO SPACIOUS RECEPTION ROOMS
- MODERN FITTED FAMILY BATHROOM
- LOUNGE WITH OPEN FIREPLACE
- WELL-APPOINTED KITCHEN
- DOWNSTAIRS WC
- PRETTY REAR GARDEN
- OFF-ROAD PARKING & CAR PORT
- IDYLIC VILLAGE LOCATION
- EPC RATING = C

Guide Price
£400,000



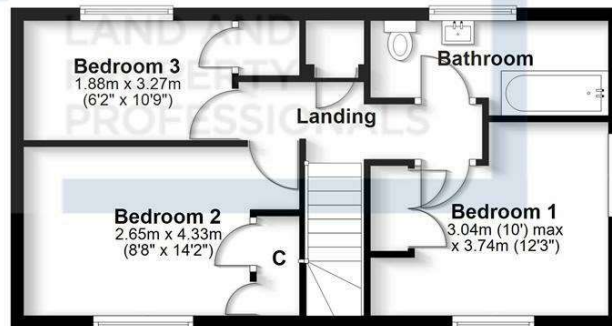
Ground Floor

Approx. 56.5 sq. metres (608.0 sq. feet)



First Floor

Approx. 42.2 sq. metres (453.9 sq. feet)



Total area: approx. 98.7 sq. metres (1061.9 sq. feet)

All efforts have been made to ensure the measurements are accurate on this floor plan, however these are for guidance purposes only.
Plan produced using PlanUp.



EPC Rating - C

Tenure - Freehold

Council Tax Band - D

Local Authority
Wychavon District Council



We routinely refer clients to both our recommended legal firm and a panel of financial services providers. It is your decision whether you choose to deal with these companies. In making that decision, you should know that we receive a referral fee.

**SHELDON
BOSLEY
KNIGHT**

LAND AND
PROPERTY
PROFESSIONALS